

PRESS RELEASE



ALL LIMITATIONS ARE SELF-IMPOSED™

September 16, 2019

RE: INTRODUCTION OF 1" POLYPROPYLENE PUMP (BOLTED, FLANGED, SIDE-PORTED)

JDA GLOBAL is pleased to announce the introduction of the 1" poly pump, featuring bolted design with flanged connections, side-ported. This model is equipped with the PWR-FLO™ air distribution system, giving the customer maximum efficiency and on/off reliability.

The bolted design is favored by many in the chemical transfer industry, while the flanged connections are less susceptible to leaking when properly tightened.

This NPF25 1" model features all poly non-wetted parts, in conjunction with the wetted parts, providing maximum chemical resistance. This unit also serves as a 100% retrofit to the leading AODD brand.

For nomenclature and price, please contact JDA GLOBAL

1645 W. Park Avenue, Suite 200
Redlands, CA 92373
USA
909.798.9532

contact@jdaglobal.com
www.jdaglobal.com
JDA Global LLC

John D. Allen, CEO



For more information, contact:

Jacqueline Barsich Lunsford
Marketing Manager
jbarsich@jdaglobal.com

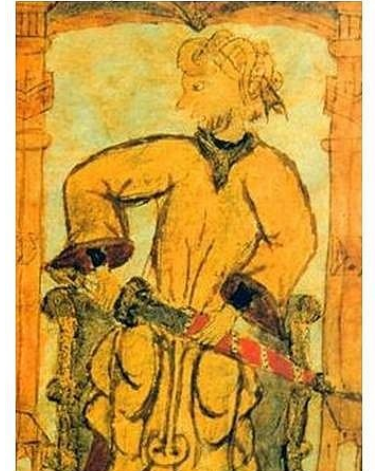
ORDER NOW

**CAPTURE
MARKET
SHARE...**

**HIGH
QUALITY,
LOWEST
PRICE...**



NOMAD™



NO BOUNDARIES™